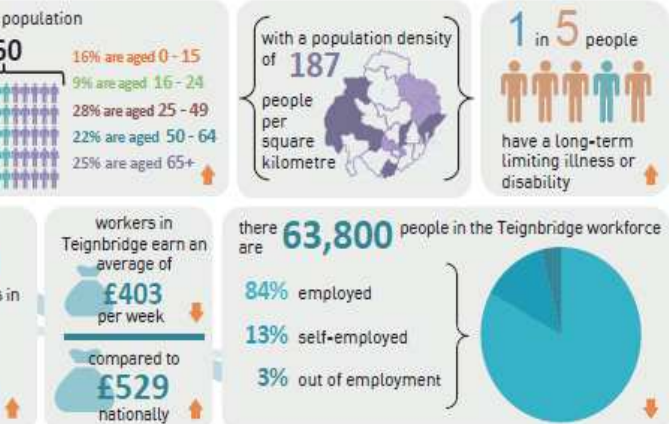


we are today

Our role as a district council is to provide a clearly defined range of services that meet the needs of our community leader working with others and using our powers to act on residents' best interests of Teignbridge.



Figures given are the most recent data available. Arrows indicate whether values have risen or fallen since previous recording.

Data source information at www.teignbridge.gov.uk/councilstrategy.

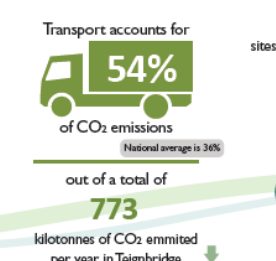
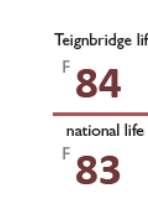
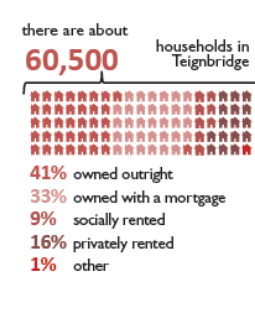
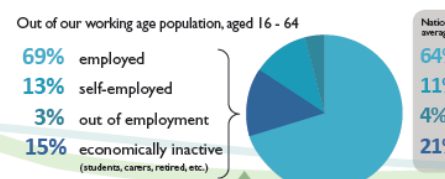
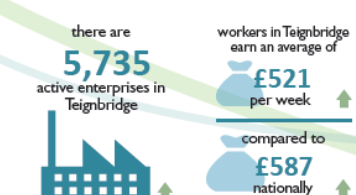
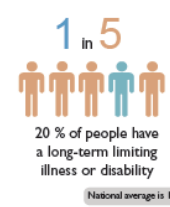
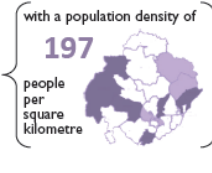
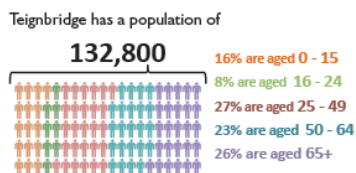
7

Data Update

Office of National Statistics (ONS) unless otherwise stated

Where we are today

Our role as a district council is to provide a clearly defined range of services that meet the needs of our customers, to be a community leader working with others and using our powers to act on residents' concerns and in the best interests of Teignbridge.



6 Figures and percentages given are the most recent data available and may not add up to 100% due to rounding.

Data source information is available at www.teignbridge.gov.uk/councilstrategy

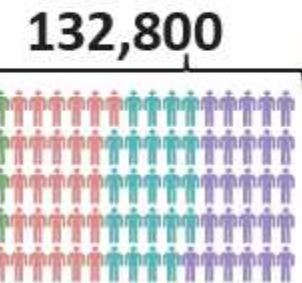
Population

Annual Population Estimates 2018

Population	+5440
0-16-24	-1%
17-25-49	-1%
26-50-64	+1%
65+	+1%
Immigration	+2

Annual population estimates. Figures are available for various administrative and electoral geographies and for different population sub-groups, for example, estimates of the very old and estimates by marital status.

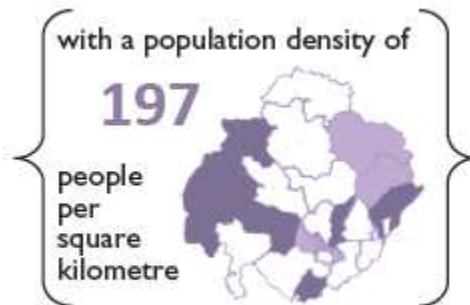
Teignbridge has a population of



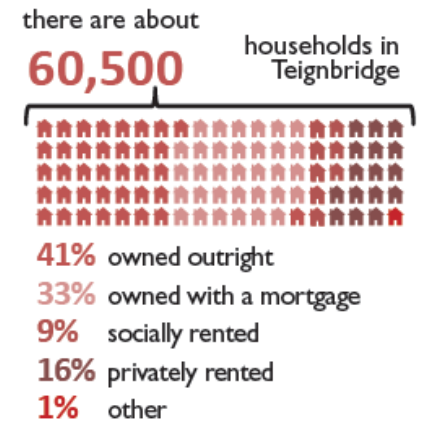
- 16% are aged 0 - 15
- 8% are aged 16 - 24
- 27% are aged 25 - 49
- 23% are aged 50 - 64
- 26% are aged 65+

National population averages

19%
11%
33%
19%
18%



Households



Households +5,500

Household estimate from Council Tax records 2019 (total dwellings minus empty dwellings and second homes)

Tenure from 2011 Census - comparable data since the

Inter-Departmental Business Register (IDBR) is a comprehensive list of UK businesses used by government for statistical purposes. The IDBR provides the main sampling frame for surveys of businesses carried out by the Office for National Statistics (ONS) and other government departments. The IDBR covers 2.6 million businesses in all sectors of the UK economy, other than very small businesses (those without employees and with turnover below the tax threshold) and non-profit making organisations.

Inter – Departmental Business Register (IDBR) UK Business Counts 2019



The Annual Survey of Hours and Earnings provides information about the distribution and make-up of earnings paid for employees in all sectors and occupations across the UK.

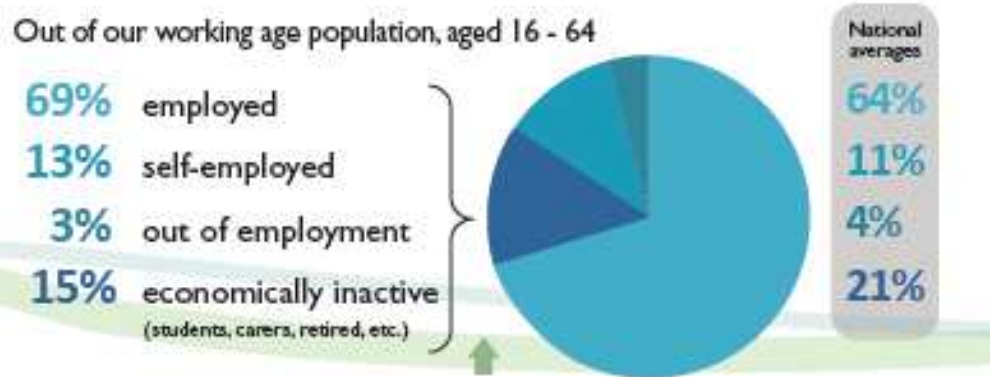
Annual Survey of Hours and Earnings (ASHE) 2019

Economy

Enterprises + 6
Wages + 1

(Other figures not comparable)

Annual Population Survey 2018-2019



The Annual Population Survey (APS) is a continuous household survey, covering the UK, with the aim of providing estimates between censuses of main social and labour market variables at a local area level. The APS is not a stand-alone survey, but uses data combined from two waves of the main [Labour Force Survey \(LFS\)](#) with data collected on a local sample boost. Apart from employment and unemployment, the topics covered in the survey include housing, ethnicity, religion, health and education.

Health

2011 Census

people report their health as



45% very good
35% good
15% fair
4% bad
1% very bad



20 % of people have a long-term limiting illness or disability

National average is 17%

More recent figures not available

Life Expectancy at Birth by Local Areas

Period life expectancy at a given age for an area is the average number of years a person would live, if he or she experienced the particular area's age-specific mortality rates for that time period throughout his or her life.

Teignbridge life expectancy

F **84** M **80** ↔

national life expectancy

F **83** M **79**

Female National +1

Environment

Teignbridge is home to
3053
 sites of special architectural and historical interest



Historic England
 New data, 2019

Listed Buildings, Scheduled Monuments, Listed Parks and Gardens



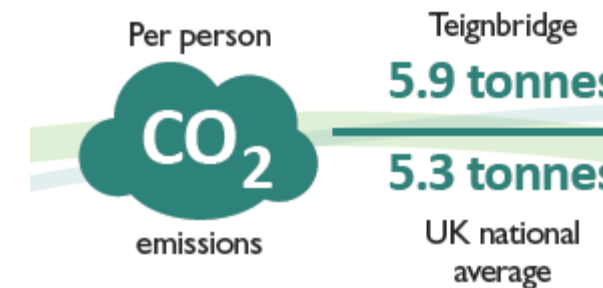
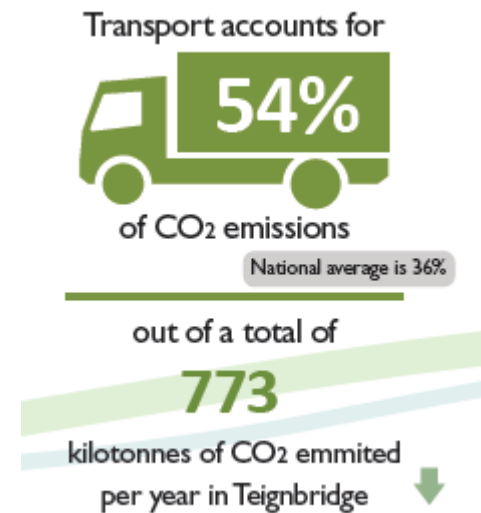
Teignbridge +1%
 National +0.5%

Department for Environment, Food and Rural Affairs LA collected waste generation 2018-19, % household waste sent for reuse, recycling or composting

Department for Business, Energy and Industrial Strategy – UK local and regional CO2 emissions 2017 estimates

The purpose of these estimates is to assist those wishing to understand and assess changes in Local Authority emissions. Local Authorities are not mandated to have greenhouse gas emissions reductions targets, but some Local Authorities do have such targets. These statistics allow Local Authorities to track their GHG emissions trends over time, and measure progress against any targets they have.

Total -99,000 to
 Transport +13%



2014 – 2017
 Teignbridge -0.3 tonnes
 UK -0.9 tonnes