

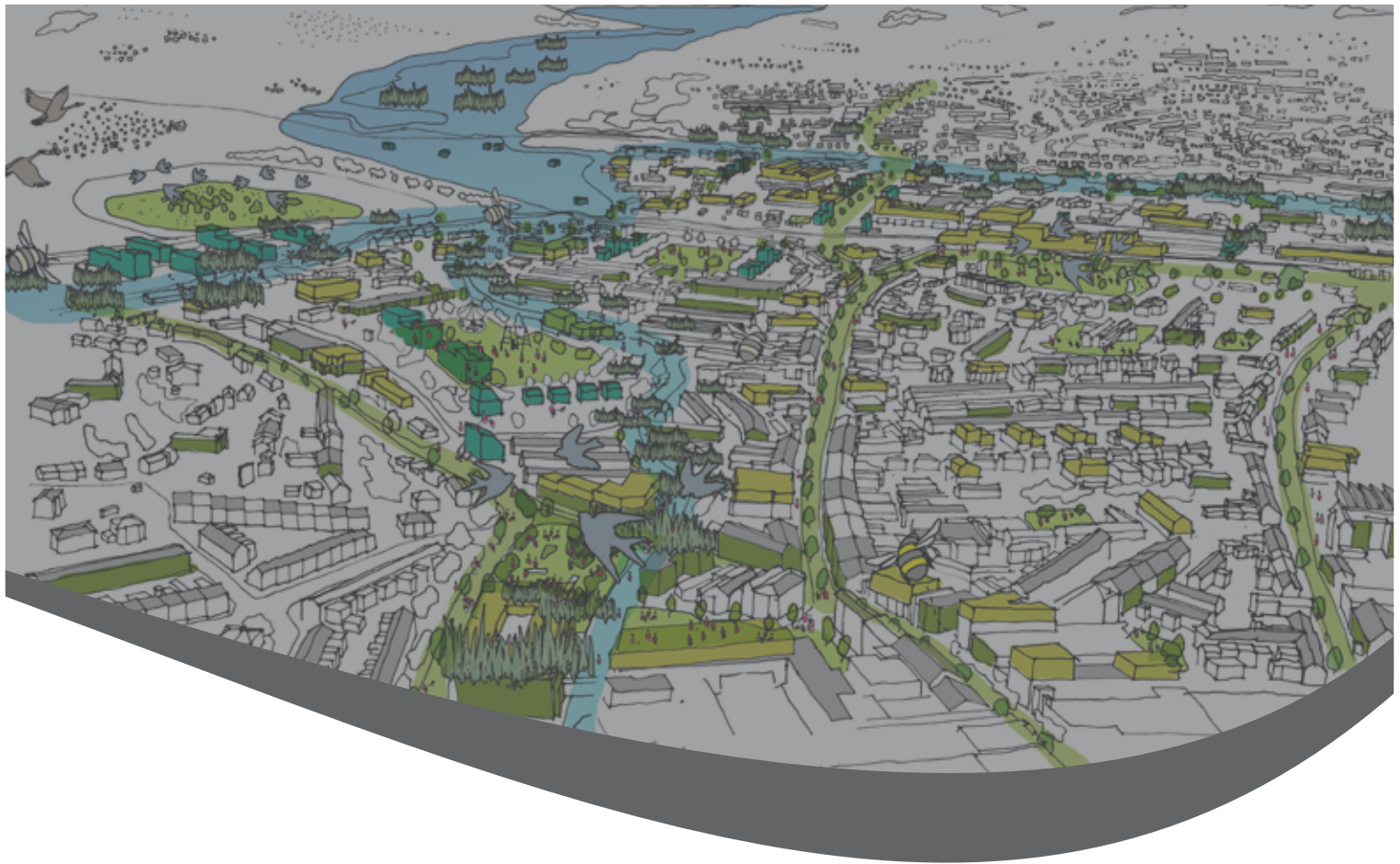


PlanTeignbridge

Appendix 1: Superseded and Extant Policies

Teignbridge Local Plan
2020 - 2040

May 2026



Appendix 1: Superseded and Extant Policies

Superseded and Extant Local Plan Policies of the Teignbridge Local Plan 2013 – 2033 (adopted 2014)

Chapter	Local Plan 2013 - 2033	Status for Local Plan 2040	Local Plan 2040 policy
2 Strategy / Policies	S1A Presumption in favour of Sustainable Development	Superseded	GP1: Sustainable Development
2 Strategy / Policies	S1 Sustainable Development Criteria	Superseded	GP1: Sustainable Development
2 Strategy / Policies	S2 Quality Development	Superseded	DW1: Quality Development; DW2: Development Principles; DW3: Design Standards
2 Strategy / Policies	S3 Land for Business, General Industry and Storage and Distribution	Superseded	EC1: Business Development
2 Strategy / Policies	S4 Land for New Homes	Superseded	GP2: Development in Teignbridge
2 Strategy / Policies	S5 Infrastructure	Superseded	GP7: Infrastructure & Transport Networks
2 Strategy / Policies	S6 Resilience	Superseded	CC1: Resilience
2 Strategy / Policies	S7 Carbon Emission Targets	Superseded	Section 3: Climate Change and CC2: Carbon Statements
2 Strategy / Policies	S9 Sustainable Transport	Superseded	CC4: Sustainable Transport
2 Strategy / Policies	S10 Transport Networks	Superseded	GP7: Infrastructure & Transport Networks
2 Strategy / Policies	S11 Pollution	Superseded	GP1: Sustainable Development and EN8: Light Pollution
2 Strategy / Policies	S12 Tourism	Superseded	EC2: Local Supporting Services for Employment Sites and EC6: New Tourist Accommodation and Attractions
2 Strategy / Policies	S13 Town Centres	Superseded	EC9: Development in and around Town Centres
2 Strategy / Places	S14 Newton Abbot	Not saved	Not saved
2 Strategy / Places	S15 Kingsteignton	Not saved	Not saved
2 Strategy / Places	S16 Kingskerswell	Not saved	Not saved
2 Strategy / Places	S17 Dawlish	Not saved	Not saved
2 Strategy / Places	S18 Teignmouth	Not saved	Not saved
2 Strategy / Places	S19 Bovey Tracey	Not saved	Not saved

Chapter	Local Plan 2013 - 2033	Status for Local Plan 2040	Local Plan 2040 policy
2 Strategy / Places	S20 Chudleigh	Not saved	Not saved
2 Strategy / Places	S21 Villages	Not saved	Not saved
2 Strategy / Places	S21A Settlement Limits	Superseded	GP3: Settlement Limits and the Countryside
2 Strategy / Places	S22 Countryside	Superseded	GP3: Settlement Limits and the Countryside
2 Strategy / Places	S23 Neighbourhood Plans	Superseded	GP5: Neighbourhood Plans
2 Strategy / Places	S25 Ashburton and Buckfastleigh	Superseded	GP4: Ashburton and Buckfastleigh
3 Prosperous Economy	EC1 Business Development	Superseded	EC1: Business Development
3 Prosperous Economy	EC2 Loss of Employment Sites	Superseded	EC3: Loss of Employment Sites
3 Prosperous Economy	EC3 Rural Employment	Superseded	EC1: Business Development
3 Prosperous Economy	EC4 Working from Home	Superseded	EC5: Working from Home
3 Prosperous Economy	EC5 Equine Development	Superseded	EN5: Equine Development
3 Prosperous Economy	EC6 Large Scale Retail Development	Superseded	EC11: Large Scale Retail Development
3 Prosperous Economy	EC7 Primary Shopping Frontages	Superseded	EC10: Vital and Viable Town Centres
3 Prosperous Economy	EC8 Secondary Shopping Frontages	Superseded	EC10: Vital and Viable Town Centres
3 Prosperous Economy	EC9 Developments in Town Centres	Superseded	EC9: Development in and around Town Centres
3 Prosperous Economy	EC10 Local Shops	Superseded	EC12: Local Shops
3 Prosperous Economy	EC11 Tourist Accommodation	Superseded	EC6: New Tourist Accommodation and Attractions
3 Prosperous Economy	EC12 Tourist Attractions	Superseded	EC6: New Tourist Accommodation and Attractions
4 Wellbeing / Housing	WE1 Housing Plan, Monitor and Manage	Superseded	H1: Land for New Homes
4 Wellbeing / Housing	WE2 Affordable Housing Site Targets	Superseded	H2: Affordable Housing Targets
4 Wellbeing / Housing	WE3 Retention of Affordable Housing	Superseded	H3: Affordable Housing Controls
4 Wellbeing / Housing	WE4 Inclusive Design and Layout	Superseded	H4: Inclusive Mix, Design and Layout
4 Wellbeing / Housing	WE5 Rural Exceptions	Superseded	H7: Rural Exception Sites

Chapter	Local Plan 2013 - 2033	Status for Local Plan 2040	Local Plan 2040 policy
4 Wellbeing / Housing	WE6 Homes for the Travelling Community	Superseded	H10: Homes for the Travelling Community
4 Wellbeing / Housing	WE6A Middletree Park – Haldon	Superseded	Not saved
4 Wellbeing / Housing	WE7 Custom Build Dwellings	Superseded	H6: Custom Build
4 Wellbeing / Housing	WE8 Domestic Extensions, Ancillary Domestic Curtilage Buildings and Boundary Treatments	Superseded	H11: Householder Development
4 Wellbeing / Housing	WE9 Rural Workers' Dwellings	Superseded	H16: Rural Workers' Dwellings
4 Wellbeing / Housing	WE10 Removal of Conditions Imposed on Rural Workers' Dwellings	Superseded	H17: Removal of Conditions Imposed on Rural Workers' Dwellings
4 Wellbeing / Infrastructure	WE11 Green Infrastructure	Superseded	GP6: Loss of Local Facilities and Services; DW2: Development Principles; DW3: Design Standards
4 Wellbeing / Infrastructure	WE12 Loss of Local Facilities	Superseded	GP6: Loss of Local Facilities and Services
4 Wellbeing / Infrastructure	WE13 Protection of Recreational Land and Buildings	Superseded	GP6: Loss of Local Facilities and Services
5 Quality Environment	EN1 Strategic Open Breaks	Superseded	EN1: Setting of Settlements
5 Quality Environment	EN2 Undeveloped Coast	Superseded	EN2: Undeveloped Coast
5 Quality Environment	EN2A Landscape Protection and Enhancement	Superseded	EN4: Landscape Protection and Enhancement
5 Quality Environment	EN3 Carbon Reduction Plans	Superseded	CC2: Carbon Statements
5 Quality Environment	EN4 Flood Risk	Superseded	EN6: Flood Risk and Water Quality
5 Quality Environment	EN5 Heritage Assets	Superseded	EN17: Heritage Assets
5 Quality Environment	EN6 Air Quality	Superseded	EN7: Air Quality
5 Quality Environment	EN7 Contaminated Land	Superseded	EN9: Contaminated Land/ Land Instability
5 Quality Environment	EN8 Biodiversity Protection and Enhancement	Superseded	EN10: Biodiversity and Geodiversity
5 Quality Environment	EN9 Important Habitats and Features	Superseded	EN11: Important Habitats and Features
5 Quality Environment	EN10 European Wildlife Sites	Superseded	EN13: European Wildlife Sites

Chapter	Local Plan 2013 - 2033	Status for Local Plan 2040	Local Plan 2040 policy
5 Quality Environment	EN11 Legally Protected and Priority Species	Superseded	EN12: Legally Protected and Priority Species
5 Quality Environment	EN12 Woodlands, Trees and Hedgerows	Superseded	EN16: Trees, Hedges and Woodlands
6 Heart of Teignbridge	HT1 Heart of Teignbridge – Movement	Superseded	GC1: Travel and Movement
6 Heart of Teignbridge	HT2 Heart of Teignbridge – Education	Superseded	GC3: Education
6 Heart of Teignbridge	HT3 Heart of Teignbridge – Green Infrastructure	Superseded	GC2: Connecting to Nature- Green Infrastructure and Public Realm
6 Heart of Teignbridge / Newton Abbot	NA1 Houghton Barton	Extant (excluding superseded employment land)	GC20: North of Forches and Perry Cross, Newton Abbot supersedes employment land
6 Heart of Teignbridge / Newton Abbot	NA2 Whitehill	Extant	
6 Heart of Teignbridge / Newton Abbot	NA3 Wolborough	Extant (excluding superseded employment land)	GC3: Education supersedes employment land
6 Heart of Teignbridge / Newton Abbot	NA3A Beverley Way	Extant	
6 Heart of Teignbridge / Newton Abbot	NA4 Milber Employment Area	Not saved	Not saved
6 Heart of Teignbridge / Newton Abbot	NA5 Buckland Barton	Not saved	Not saved
6 Heart of Teignbridge / Newton Abbot	NA6 Bradley Barton	Extant	
6 Heart of Teignbridge / Newton Abbot	NA8 Newton Abbot Town Centre Development	Not saved	Not saved
6 Heart of Teignbridge / Newton Abbot	NA9 Opportunity Area: Town Centre Markets Area	Superseded	GC4: Town Centre Regeneration Area
6 Heart of Teignbridge / Newton Abbot	NA10 Opportunity Area: Bradley Lane	Extant	
6 Heart of Teignbridge / Newton Abbot	NA12 Opportunity Area: Cricketfield	Not saved	Not saved
6 Heart of Teignbridge / Kingsteignton	KS1 Sands Copse	Not saved	Not saved
6 Heart of Teignbridge / Kingsteignton	KS3 Land at Abbrook	Extant	
6 Heart of Teignbridge / Kingsteignton	KS4 Town Centre Consolidation	Not saved	Not saved

Chapter	Local Plan 2013 - 2033	Status for Local Plan 2040	Local Plan 2040 policy
6 Heart of Teignbridge / Kingsteignton	KS5 Town Council Offices	Not saved	Not saved
6 Heart of Teignbridge / Kingsteignton	KS6 Penns Mount	Extant	
6 Heart of Teignbridge / Kingsteignton	KS8 Land at Rydon Depot	Extant	
6 Heart of Teignbridge / Kingskerswell	KK1 Land off Torquay Road and Embury Close	Extant	
6 Heart of Teignbridge / Kingskerswell	KK2 Land to the rear of Mount Pleasant Road	Extant	
6 Heart of Teignbridge / Kingskerswell	KK3 Land to the rear of the Barn Owl	Extant	
6 Heart of Teignbridge / Kingskerswell	KK4 Aller Valley Country Park and Aller Valley Trail	Superseded	GC2: Connecting to Nature- Green Infrastructure and Public Realm
6 Heart of Teignbridge / Kingskerswell	KK5 Village Centre	Not saved	Not saved
7 Edge of Exeter	SWE1 South West of Exeter Urban Extension	Extant	
7 Edge of Exeter	SWE2 Employment adjacent to Peamore	Not saved	Not saved
7 Edge of Exeter	SWE3 Ridge Top Park	Extant	
8 Dawlish	DA2 North West Secmaton Lane	Extant (excluding superseded employment land)	CT1 supersedes employment land
8 Dawlish	DA4 West of Southdowns Road	Not saved	Not saved
8 Dawlish	DA5 Land at Littleleigh, Holcombe	Not saved	Not saved
8 Dawlish	DA6 Dawlish Green Infrastructure	Extant	
8 Dawlish	DA7 Dawlish Warren Coastal Park	Not saved	Not saved
8 Dawlish	DA9 Dawlish – Movement	Not saved	Not saved
8 Dawlish	DA10 Education Facilities	Not saved	Not saved
8 Dawlish	DA12 Regeneration	Not saved	Not saved
9 Teignmouth	TE3 West of Higher Exeter Road	Extant	
9 Teignmouth	TE3A North of New Road	Extant	
9 Teignmouth	TE4 Regeneration Proposals	Extant	
9 Teignmouth	TE5 Marina Facility at Polly Steps	Extant	

Chapter	Local Plan 2013 - 2033	Status for Local Plan 2040	Local Plan 2040 policy
10 Bovey Tracey	BT1 Dean Park	Extant (excluding superseded Local Green Space at Bonds Meadow)	
10 Bovey Tracey	BT2 Bradley Bends	Not saved	Not saved
10 Bovey Tracey	BT2A North of Indio House	Extant	
10 Bovey Tracey	BT2C Old Newton Road	Not saved	Not saved
10 Bovey Tracey	BT2D Abbey Road Primary School Site	Not saved	Not saved
10 Bovey Tracey	BT3 Challabrook	Extant	
10 Bovey Tracey	BT4 Land off Le Molay Littry Way	Not saved	Not saved
10 Bovey Tracey	BT5 Town Centre	Not saved	Not saved
10 Bovey Tracey	BT6 Heathfield	Not saved	Not saved
11 Chudleigh	CH1 Land at Rocklands	Extant	
11 Chudleigh	CH2 Land North East of Chudleigh	Extant	
11 Chudleigh	CH3 Land around James House	Extant	
11 Chudleigh	CH4 Land at Colway Lane	Extant	
11 Chudleigh	CH5 Land at Grovelands	Extant	
11 Chudleigh	CH6 North West of Town Centre	Extant	
11 Chudleigh	CH8 Town Centre Enhancement	Not saved	Not saved
11 Chudleigh	CH9 Green Infrastructure	Not saved	Not saved

Development Plan Document	Policy	Proposed modification to status	Superseded by Local Plan 2040 Policy
Bishopsteignton Neighbourhood Plan	BSE1	Superseded	Policy V3

